

Weekly Progress Report

WPR014
OKI Toshiyuki
2004/10/29

There was a big progress in MICE Hall as shown in Photo 1. Both bunds of transformers for Driver Anode Power Supply and TR-Set were installed (Photo 2). An RF Cavity, Bias Power Supply and Bias Regulator were settled in the appropriate places (Photo 3). The bias system was connected to the RF Cavity, and the cooling water pipes are in preparation (Photo 4). Almost all the AC power lines were wired between the AC Power Distributor and any power supplies (Photo 5, 6). Most of the cables between the LOI Control Console and equipments were lay across pits under ground (Photo 7), but some cables are not connected due to its shorter length. As a remaining job for the wiring, the output cables from any power supplies to HPD including the big cables for Anode power supplies, the ground bus bars and the control/interlock cables should be wired.

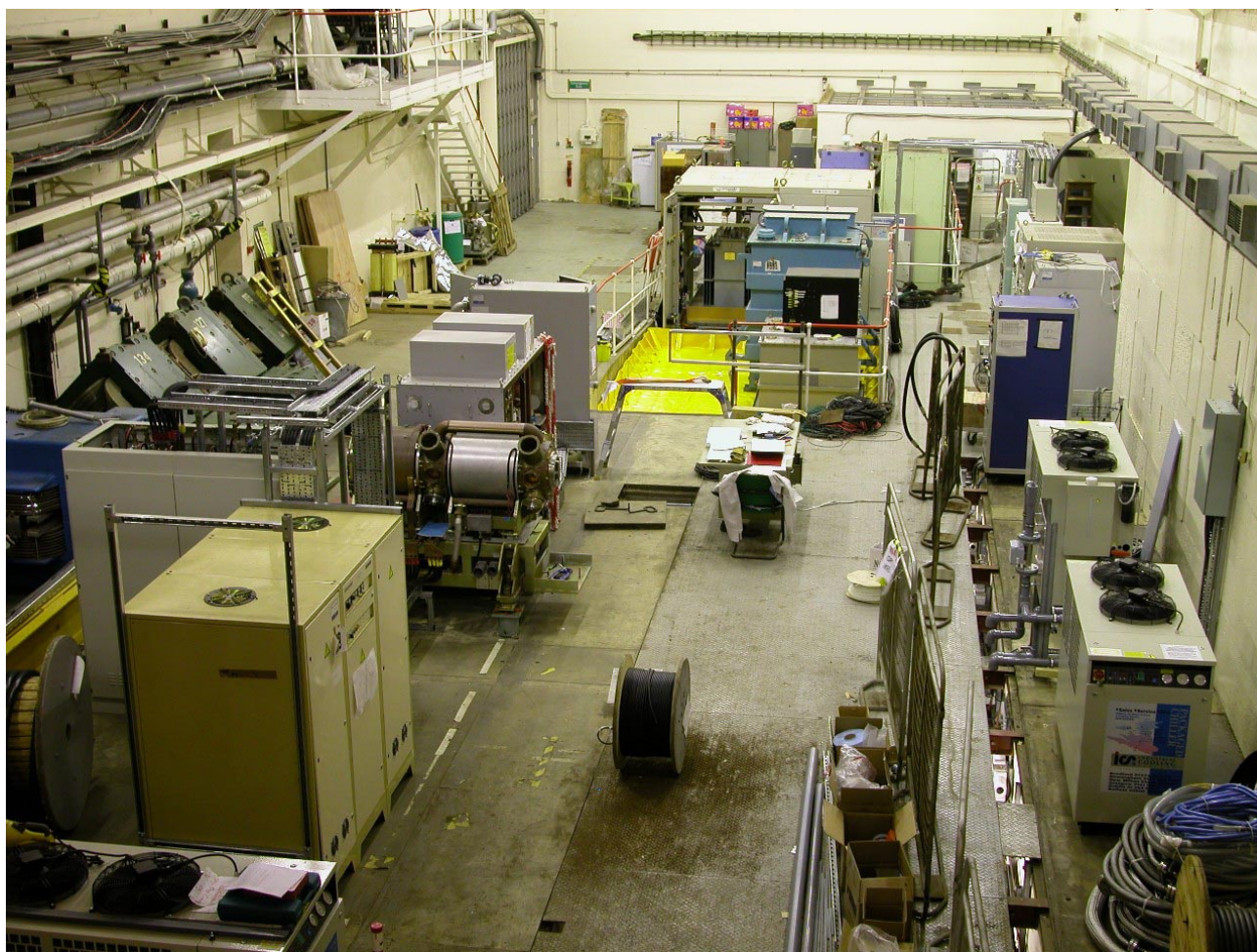


Photo 1: Progress in MICE Hall



Photo 2: Bunds

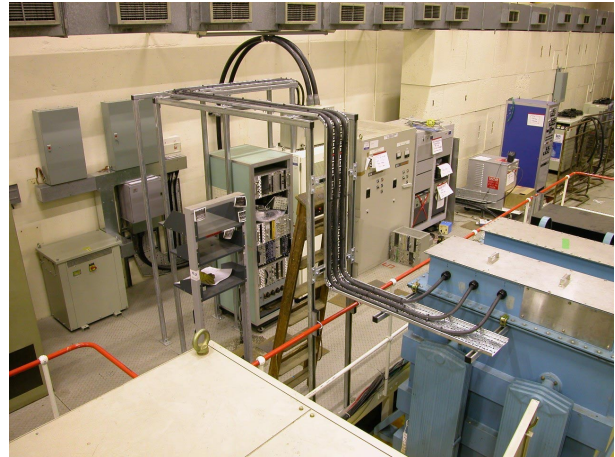


Photo 5: AC Power Distributor



Photo 3: RF Cavity with Bias system



Photo 6: Power Lines to Power Supplies

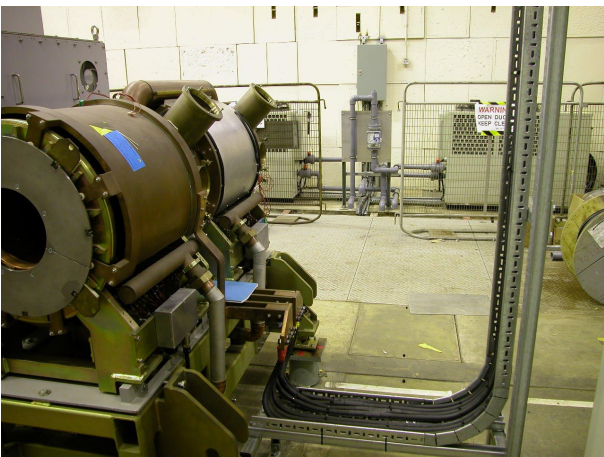


Photo 4: Cooling system for RF Cavity



Photo 7: Cables from LOI Control Console
through a pit