

Weekly Progress Report

WPR006
OKI Toshiyuki
2004/06/18

1. The shipped crates from KEK arrived at RAL as shown in Photo 1. After uncrating, these wooden panels of the crates should be broken and dumped.

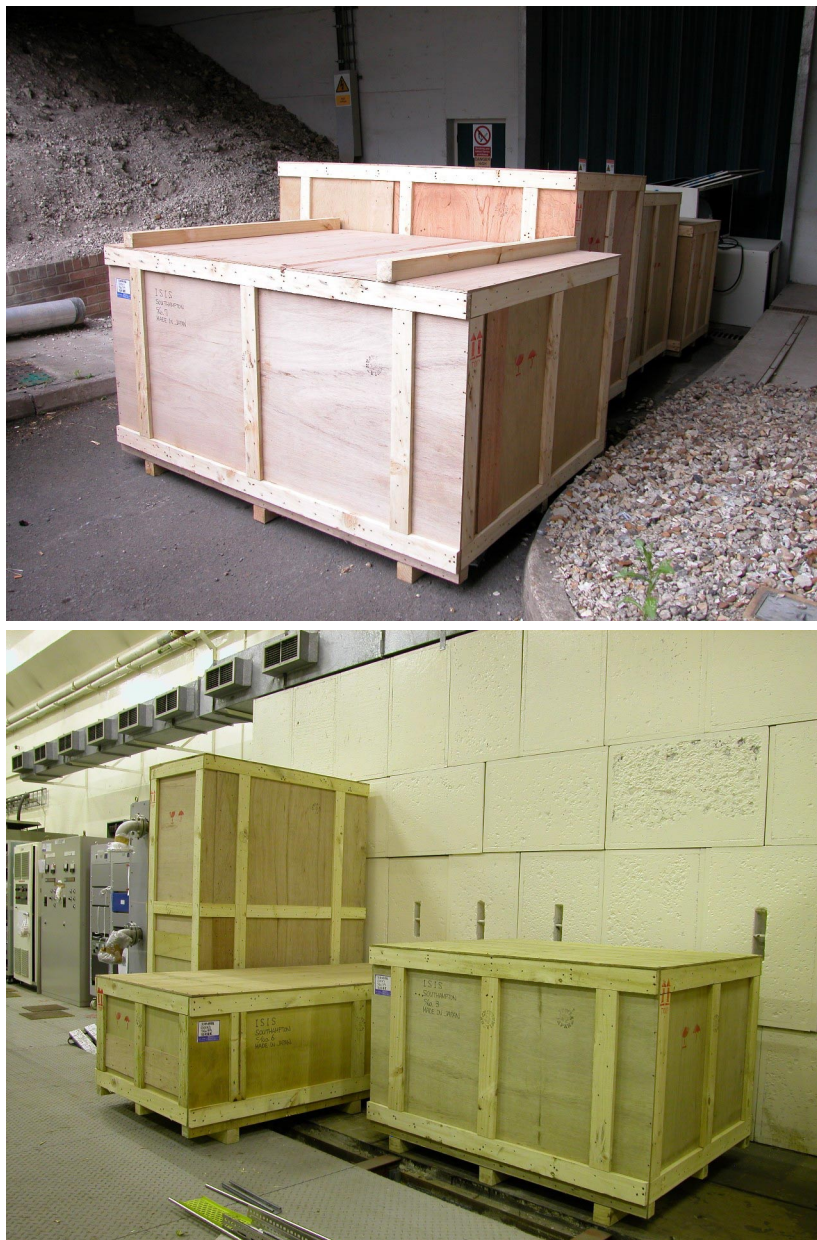


Photo 1: 7 crates arrived at RAL.

2. Drilled holes on the steel frames of RF chassis are still tapped. Because there are no RF contact fingers on the RF panel that has a contactor for an RF cavity, appropriate fingers should be put on the panel.