

**J-PARC Hadron Hall : EXPERIMENTAL REPORT on RUN#65**

		<b>Date(submitted)</b>	2015/12/18
<b>Group</b>	E15	<b>Beam line</b>	K1.8BR
<b>Reporter</b>	<b>Name</b>	<b>e-mail address</b>	
	F.Sakuma (RIKEN)	sakuma@ribf.riken.jp	
<b>Experimenters</b>	JAEA: K.Tanida LNF-INFN: D.Sirghi, F.Sirghi KEK: S.Ishimoto, S.Suzuki Kyoto-U: K.Kato Osaka-U: S.Kawasaki, H.Noumi, K.Shirotori, T.Yamaga RIKEN: T.Hashimoto, K.Itahashi, M.Iwasaki, Y.Ma, H.Ohnishi, S.Okada, H.Outa, F.Sakuma, M.Sato, Q.Zhang SMI: C.Berucci, E.Widmann, J.Zmeskal U-Tokyo: K.Kanno		
<b>Summary and Results</b> Production target : Au			
<ul style="list-style-type: none"><li>● <b><u>Calibration run (empty-target run) @ -1.0GeV/c K [K1.8ESS1=+/-200kV]</u></b> Date: Nov.15 Beam power: 39kW User time: 12:33 Production time: 10:50 Accumulated KOT: 0.8G</li><li>● <b><u>Beam-line Commissioning @ -0.7GeV/c K [K1.8ESS1=+/-100kV]</u></b> Date: Nov.16 Beam power: 39kW User time: 1:32</li><li>● <b><u>E15 2<sup>nd</sup>-physics data-taking (<sup>3</sup>He run) @ -1.0GeV/c K [K1.8ESS1=+/-200kV]</u></b> Date: Nov.19-Dec.18 Beam power: 39kW(Nov.19-25), 42kW(Nov.25-Dec.18) User time: 620:08 Production time: 519:35 Accumulated KOT: 43G (the goal of 86% achieved)</li></ul>			
<b>SCHEDULED and EXECUTED MACHINE TIME, BEAM CONDITION, DOWN TIME, Priority etc.</b> please refer to the attached sheet			
<b><u>Comments/Requests</u></b>			

## Run65 User Time

date	MR	beam condition	run	start time	end time	duration	down time	up time	up time ratio
2015/11/15	39kW	-1.0 GeV/c	empty-target	0:55	3:30	2:34	0:00	2:34	100%
2015/11/15	39kW	-1.0GeV/c	empty-target	7:24	12:31	5:06	0:00	5:05	100%
2015/11/15	39kW	-1.0GeV/c	empty-target	15:06	20:00	4:53	0:06	4:47	98%
2015/11/16	39kW	-0.7GeV/c	commissioning	18:07	19:40	1:32	0:22	1:09	75%
2015/11/19	39kW	-1.0GeV/c	production	16:16	24:00	7:43	1:01	6:42	87%
2015/11/20	39kW	-1.0GeV/c	production	0:00	24:00	24:00	7:34	16:25	68%
2015/11/21	39kW	-1.0GeV/c	production	0:00	24:00	24:00	0:10	23:49	99%
2015/11/22	39kW	-1.0GeV/c	production	0:00	24:00	24:00	11:52	12:07	51%
2015/11/23	39kW	-1.0GeV/c	production	0:00	24:00	24:00	0:41	23:18	97%
2015/11/24	39kW	-1.0GeV/c	production	0:00	9:00	9:00	3:21	5:38	63%
2015/11/25	39kW	-1.0GeV/c	production	3:00	10:00	7:00	7:00	0:00	
	42kW	-1.0GeV/c	production	22:40	24:00	1:19	0:00	1:19	
						8:19	7:00	1:19	16%
2015/11/26	42kW	-1.0GeV/c	production	0:00	24:00	24:00	5:49	18:10	76%
2015/11/27	42kW	-1.0GeV/c	production	0:00	24:00	24:00	0:14	23:45	99%
2015/11/28	42kW	-1.0GeV/c	production	0:00	24:00	24:00	1:51	22:08	92%
2015/11/29	42kW	-1.0GeV/c	production	0:00	24:00	24:00	2:54	21:05	88%
2015/11/30	42kW	-1.0GeV/c	production	0:00	24:00	24:00	1:24	22:35	94%
2015/12/1	42kW	-1.0GeV/c	production	0:00	24:00	24:00	3:49	20:10	84%
2015/12/2	42kW	-1.0GeV/c	production	0:00	9:00	9:00	2:20	6:39	
	42kW	-1.0GeV/c	production	22:41	24:00	1:19	0:04	1:14	
						10:19	2:25	7:53	77%
2015/12/3	42kW	-1.0GeV/c	production	0:00	24:00	24:00	0:58	23:01	96%
2015/12/4	42kW	-1.0GeV/c	production	0:00	24:00	24:00	2:01	21:58	92%
2015/12/5	42kW	-1.0GeV/c	production	0:00	24:00	24:00	1:44	22:15	93%
2015/12/6	42kW	-1.0GeV/c	production	0:00	24:00	24:00	0:26	23:33	98%
2015/12/7	42kW	-1.0GeV/c	production	0:00	9:00	9:00	0:02	8:57	
	42kW	-1.0GeV/c	production	22:28	24:00	1:31	0:44	0:47	
						10:31	0:46	9:45	93%
2015/12/8	42kW	-1.0GeV/c	production	0:00	24:00	24:00	2:21	21:38	90%
2015/12/9	42kW	-1.0GeV/c	production	0:00	24:00	24:00	0:29	23:30	98%
2015/12/10	42kW	-1.0GeV/c	production	0:00	24:00	24:00	0:23	23:36	98%
2015/12/11	42kW	-1.0GeV/c	production	0:00	12:00	12:00	0:04	11:56	
		-1.0GeV/c	production	22:45	24:00	1:14	0:15	0:59	
						13:14	0:19	12:55	98%
2015/12/12	42kW	-1.0GeV/c	production	0:00	24:00	24:00	0:14	23:45	99%
2015/12/13	42kW	-1.0GeV/c	production	0:00	24:00	24:00	0:08	23:51	99%
2015/12/14	42kW	-1.0GeV/c	production	0:00	24:00	24:00	0:34	23:25	98%
2015/12/15	42kW	-1.0GeV/c	production	0:00	24:00	24:00	0:44	23:15	97%
2015/12/16	42kW	-1.0GeV/c	production	0:00	24:00	24:00	3:14	20:45	86%
2015/12/17	42kW	-1.0GeV/c	production	0:00	24:00	24:00	1:05	22:54	95%
2015/12/18	42kW	-1.0GeV/c	production	0:00	9:00	9:00	0:37	8:22	93%
sum						634:15	66:50	567:24	89%

## empty-target run (Nov.15)

date	MR	beam condition	duration	down time	up time	up time ratio
2015/11/15	39kW	-1.0 GeV/c	12:33	0:06	12:27	99%

production-run

10:50

802.3M kaon on target  
(DEF\*0.7)

ratio

production

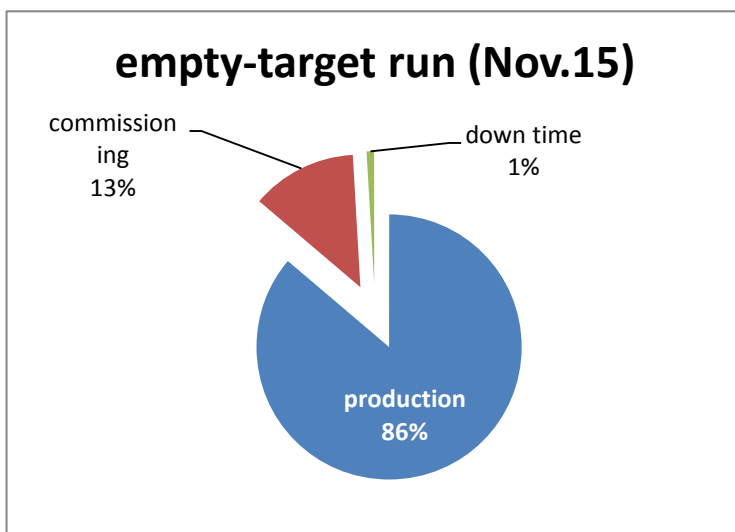
86%

commissioning

13%

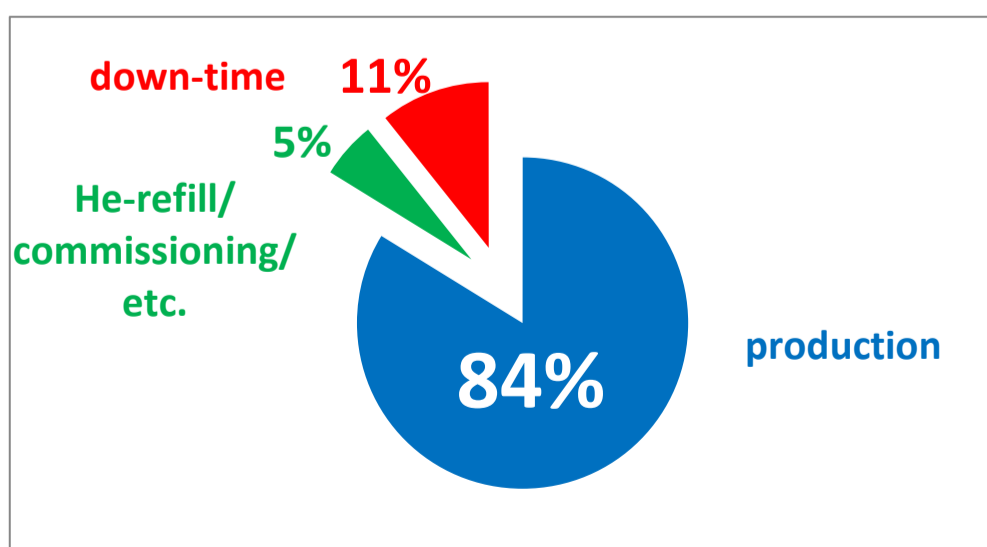
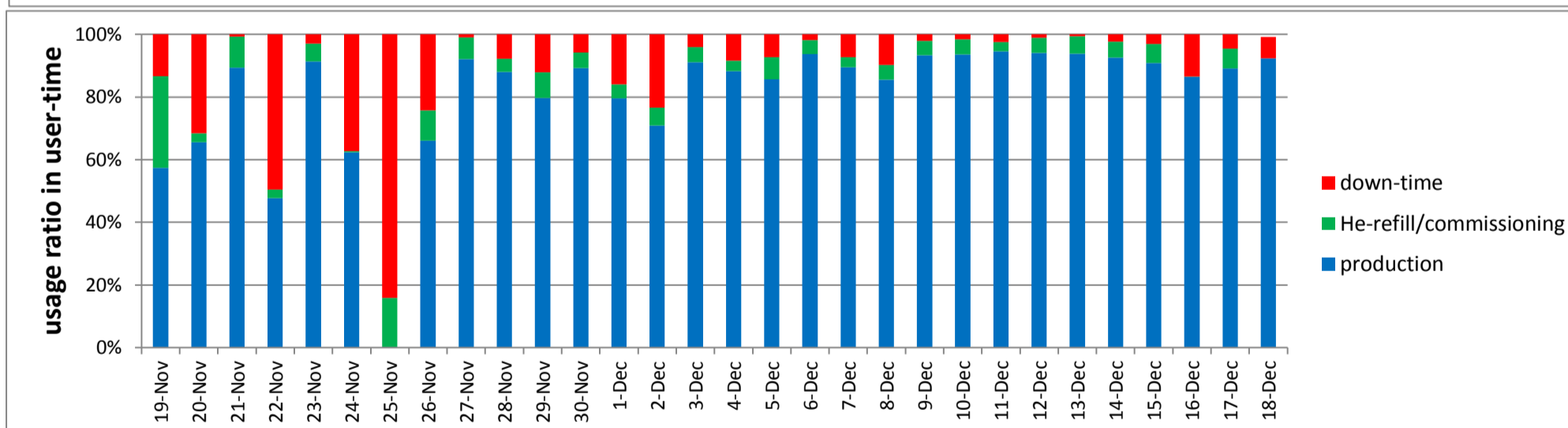
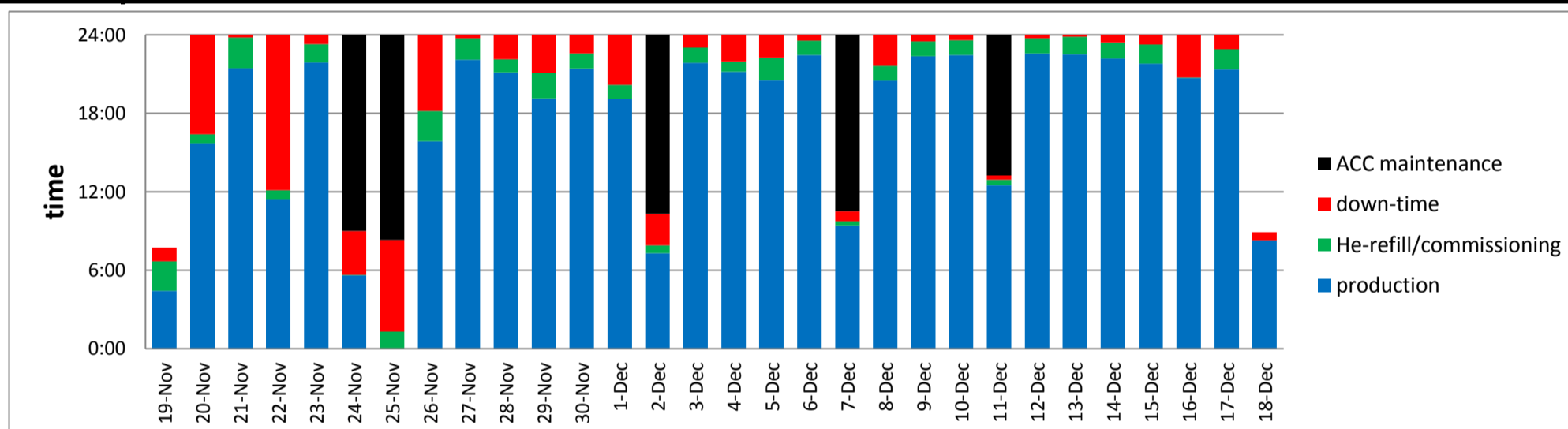
down time

1%



### breakdown of the production-time (Nov.19-Dec.18)

date	MR	beam condition	duration	maintenance	down time	up time	up time ratio	production (time)	He-refill/commissioning (time)	production (ratio)	He-refill/commissioning (ratio)	down-time (ratio)
2015/11/19	39kW	-1.0 GeV/c	7:43	0:00	1:01	6:42	87%	4:26	2:16	57%	29%	13%
2015/11/20	39kW	-1.0 GeV/c	24:00	0:00	7:34	16:25	68%	15:43	0:41	66%	3%	32%
2015/11/21	39kW	-1.0 GeV/c	24:00	0:00	0:10	23:49	99%	21:26	2:22	89%	10%	1%
2015/11/22	39kW	-1.0 GeV/c	24:00	0:00	11:52	12:07	51%	11:26	0:40	48%	3%	50%
2015/11/23	39kW	-1.0 GeV/c	24:00	0:00	0:41	23:18	97%	21:55	1:22	91%	6%	3%
2015/11/24	39kW	-1.0 GeV/c	9:00	15:00	3:21	5:38	63%	5:36	0:01	62%	0%	37%
2015/11/25	42kW	-1.0 GeV/c	8:19	15:40	7:00	1:19	16%	0:00	1:19	0%	16%	84%
2015/11/26	42kW	-1.0 GeV/c	24:00	0:00	5:49	18:10	76%	15:51	2:19	66%	10%	24%
2015/11/27	42kW	-1.0 GeV/c	24:00	0:00	0:14	23:45	99%	22:06	1:38	92%	7%	1%
2015/11/28	42kW	-1.0 GeV/c	24:00	0:00	1:51	22:08	92%	21:07	1:01	88%	4%	8%
2015/11/29	42kW	-1.0 GeV/c	24:00	0:00	2:54	21:05	88%	19:07	1:57	80%	8%	12%
2015/11/30	42kW	-1.0 GeV/c	24:00	0:00	1:24	22:35	94%	21:25	1:10	89%	5%	6%
2015/12/1	42kW	-1.0 GeV/c	24:00	0:00	3:49	20:10	84%	19:06	1:04	80%	4%	16%
2015/12/2	42kW	-1.0 GeV/c	10:19	13:40	2:25	7:53	77%	7:18	0:35	71%	6%	23%
2015/12/3	42kW	-1.0 GeV/c	24:00	0:00	0:58	23:01	96%	21:52	1:09	91%	5%	4%
2015/12/4	42kW	-1.0 GeV/c	24:00	0:00	2:01	21:58	92%	21:11	0:46	88%	3%	8%
2015/12/5	42kW	-1.0 GeV/c	24:00	0:00	1:44	22:15	93%	20:33	1:42	86%	7%	7%
2015/12/6	42kW	-1.0 GeV/c	24:00	0:00	0:26	23:33	98%	22:28	1:05	94%	5%	2%
2015/12/7	42kW	-1.0 GeV/c	10:31	13:28	0:46	9:45	93%	9:25	0:19	90%	3%	7%
2015/12/8	42kW	-1.0 GeV/c	24:00	0:00	2:21	21:38	90%	20:30	1:08	85%	5%	10%
2015/12/9	42kW	-1.0 GeV/c	24:00	0:00	0:29	23:30	98%	22:23	1:07	93%	5%	2%
2015/12/10	42kW	-1.0 GeV/c	24:00	0:00	0:23	23:36	98%	22:27	1:08	94%	5%	2%
2015/12/11	42kW	-1.0 GeV/c	13:14	10:45	0:19	12:55	98%	12:31	0:24	95%	3%	2%
2015/12/12	42kW	-1.0 GeV/c	24:00	0:00	0:14	23:45	99%	22:35	1:09	94%	5%	1%
2015/12/13	42kW	-1.0 GeV/c	24:00	0:00	0:08	23:51	99%	22:31	1:20	94%	6%	1%
2015/12/14	42kW	-1.0 GeV/c	24:00	0:00	0:34	23:25	98%	22:12	1:12	93%	5%	2%
2015/12/15	42kW	-1.0 GeV/c	24:00	0:00	0:44	23:15	97%	21:48	1:27	91%	6%	3%
2015/12/16	42kW	-1.0 GeV/c	24:00	0:00	3:14	20:45	86%	20:43	0:01	86%	0%	14%
2015/12/17	42kW	-1.0 GeV/c	24:00	0:00	1:05	22:54	95%	21:22	1:32	89%	6%	5%
2015/12/18	42kW	-1.0 GeV/c	9:00	0:00	0:37	8:22	93%	8:18	0:00	92%	0%	7%
sum			620:08	68:35	66:21	553:47	89%	519:35	34:07	94%	6%	11%



Nov.19,16:16 – Dec.18, 9:00			
duration	production	He-refill etc.	down-time
620:08	519:35	34:07	66:21
	84%	6%	11%

